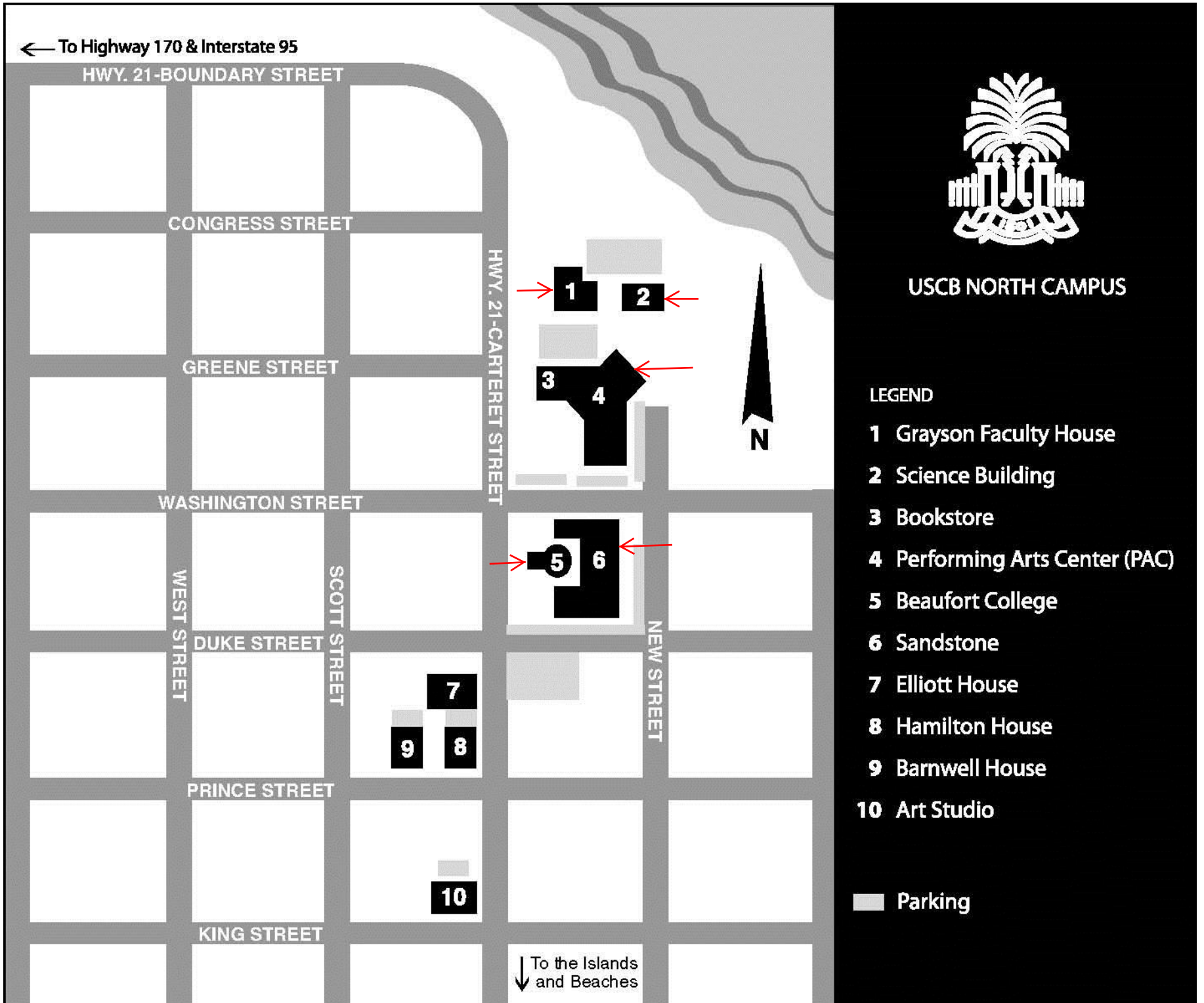


UNIVERSITY OF SOUTH CAROLINA BEAUFORT
Beaufort Campus Roof Repairs
Project No: H36-9513
PLANS
July 30, 2013



ESSEX

MANAGERS | ENGINEERS | CONSULTANTS

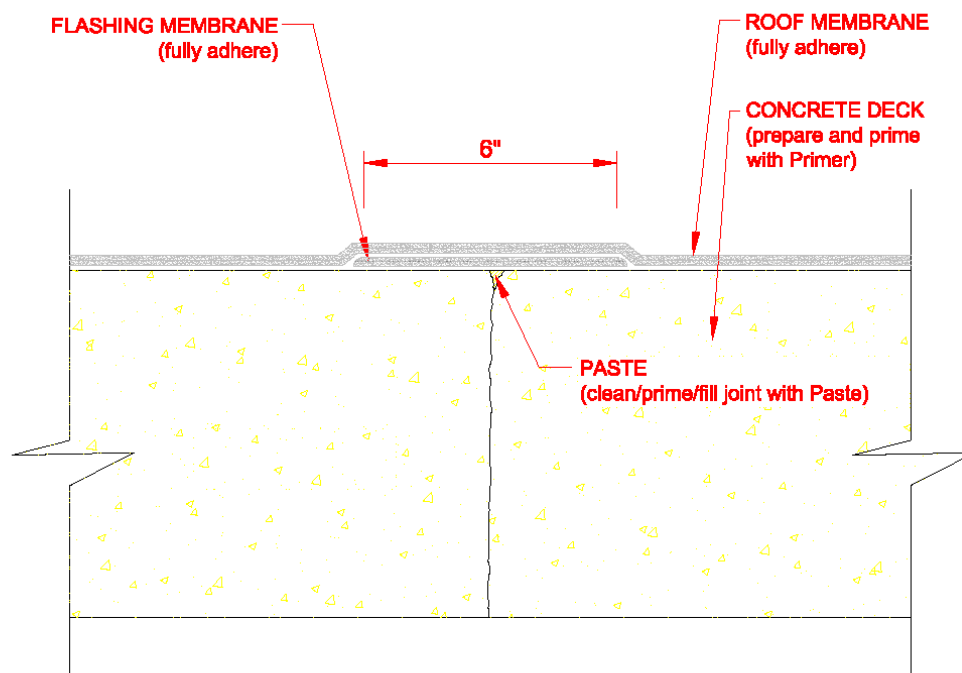
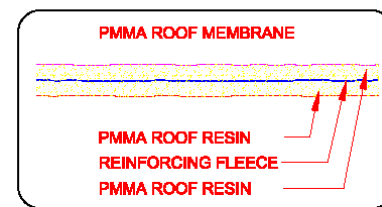
2572 Apple Valley Road, Suite 200
 Atlanta, Georgia 30319 - 3527
 404.365.9482 (tel) 404.365.8163 (fax)

4611 Hard Scrabble road, Suite 109-364
 Columbia, South Carolina 29229
 803.873.9910 (tel) 803.873.9913 (fax)

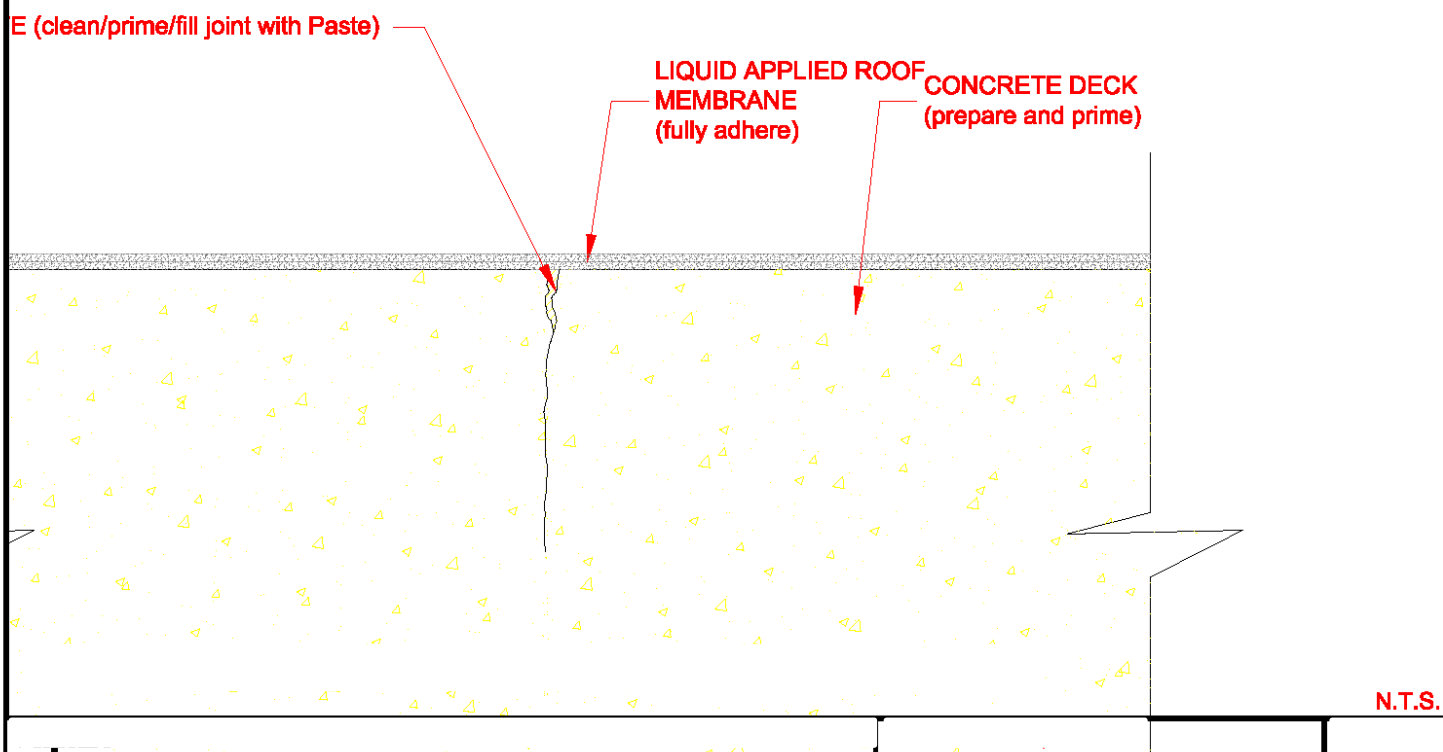
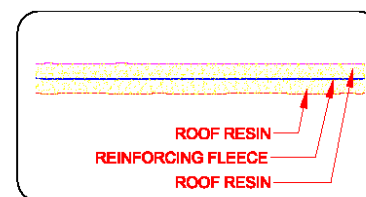
www.essexco.com

A Woman-Owned, Small Business (WOSB)

CONCRETE DYNAMIC CRACK
PMMA ROOF MEMBRANE - CONCRETE SUBSTRATE



CONCRETE STATIC CRACK
PMMA ROOF MEMBRANE - CONCRETE SUBSTRATE



LIQUID - 1



MANAGERS | ENGINEERS | CONSULTANTS

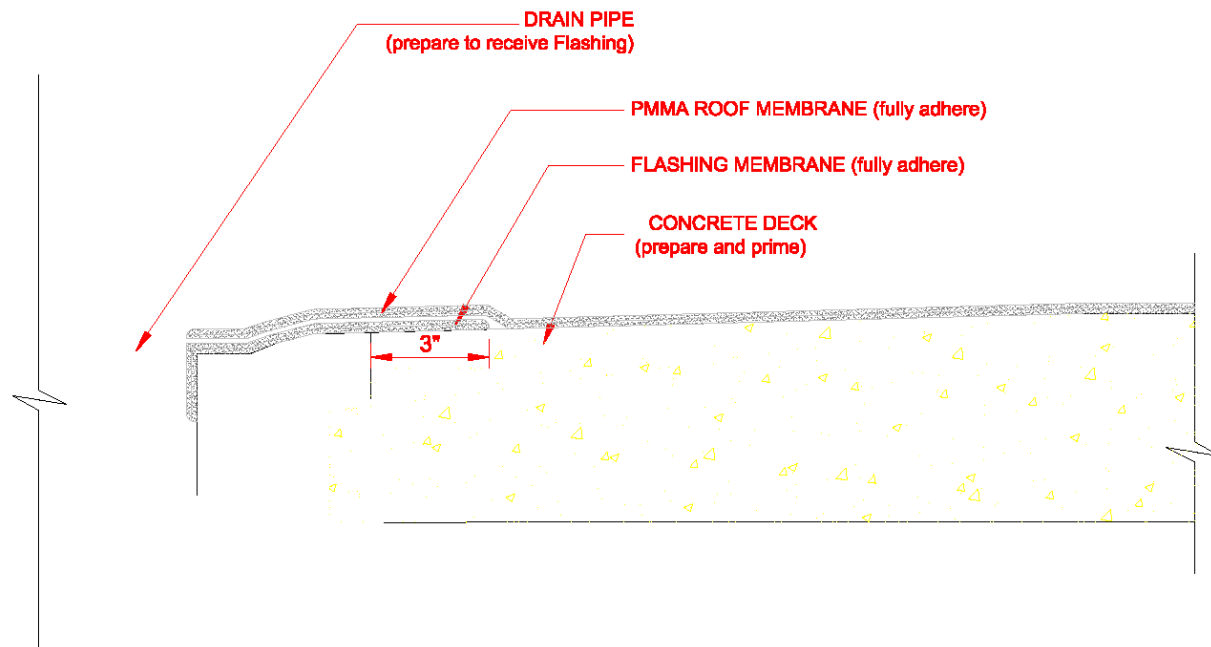
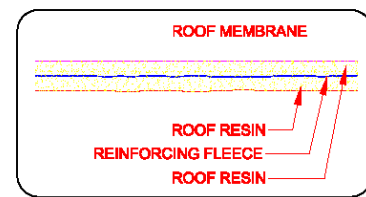
2572 Apple Valley Road, Suite 200
 Atlanta, Georgia 30319 - 3527
 404.365.9482 (tel) 404.365.8163 (fax)

4611 Hard Scrabble Road, Suite 109-364
 Columbia, South Carolina 29229
 803 873 9910 (tel) • 803 873 9913 (fax)

www.essexco.com

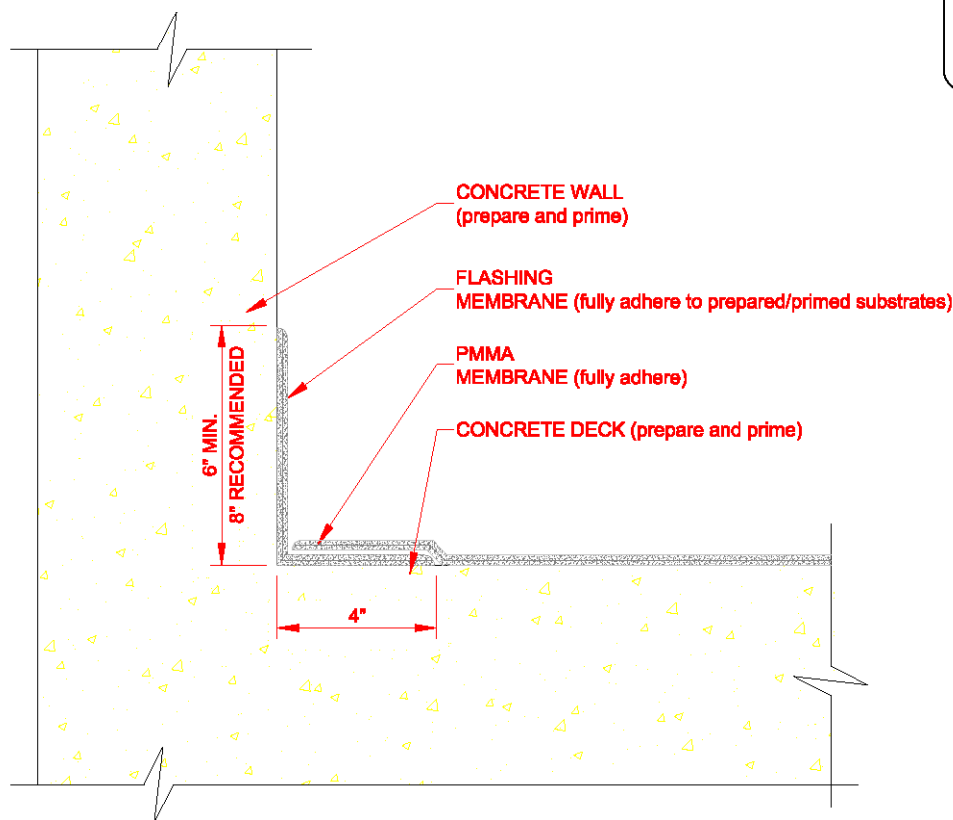
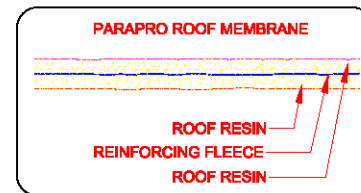
A Woman-Owned, Small Business (WOSB)

ROOF DRAIN
PMMA ROOF MEMBRANE - CONCRETE SUBSTRATE



N.T.S.

WALL FLASHING (MONOLITHIC DECK/WALL)
PMMA ROOF MEMBRANE - CONCRETE SUBSTRATE



N.T.S.

LIQUID-2

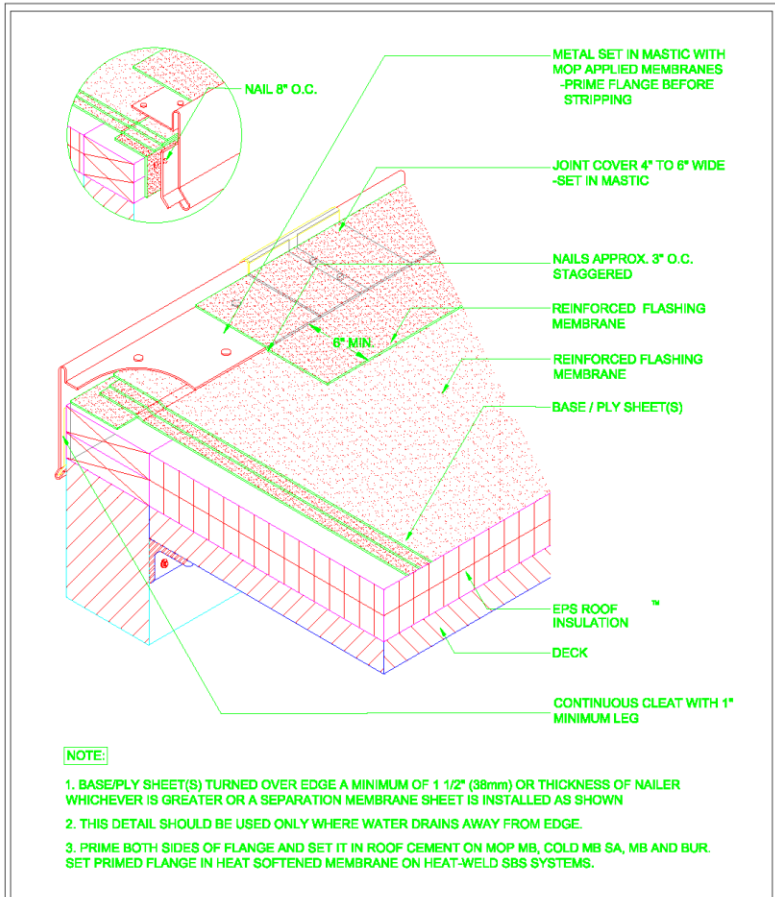
ESSEX

MANAGERS | ENGINEERS | CONSULTANTS

2572 Apple Valley Road, Suite 200
 Atlanta, Georgia 30319 - 3527
 404.365.9482 (tel) 404.365.8163 (fax)

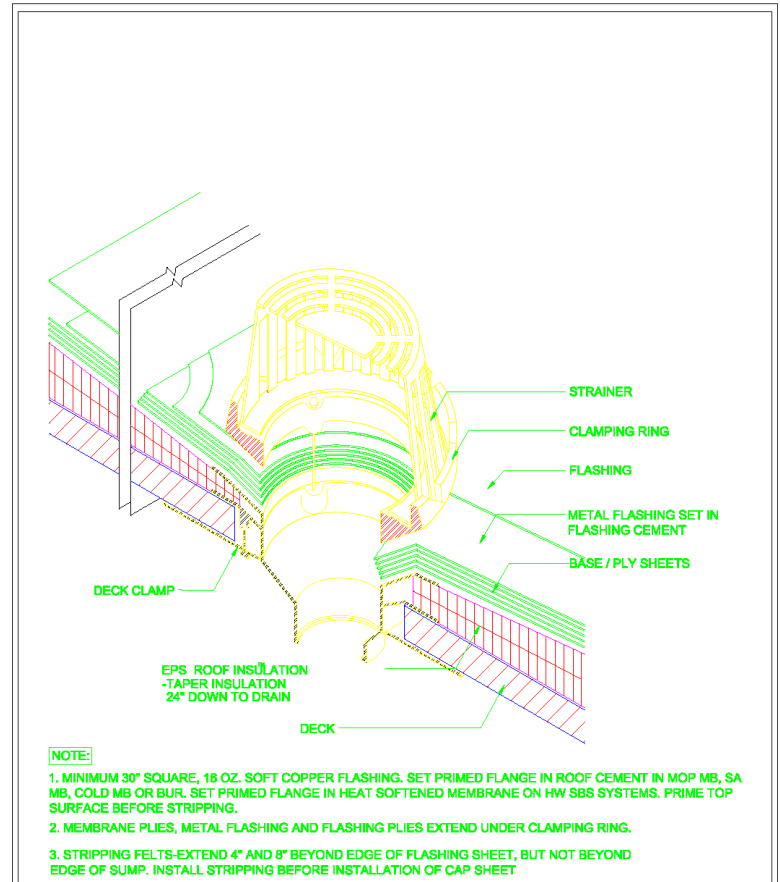
4611 Hard Scrabble Road, Suite 109-364
 Columbia, South Carolina 29229
 803.873.9910 (tel) • 803.873.9913 (fax)

www.essexco.com
 A Woman-Owned, Small Business (WOSB)



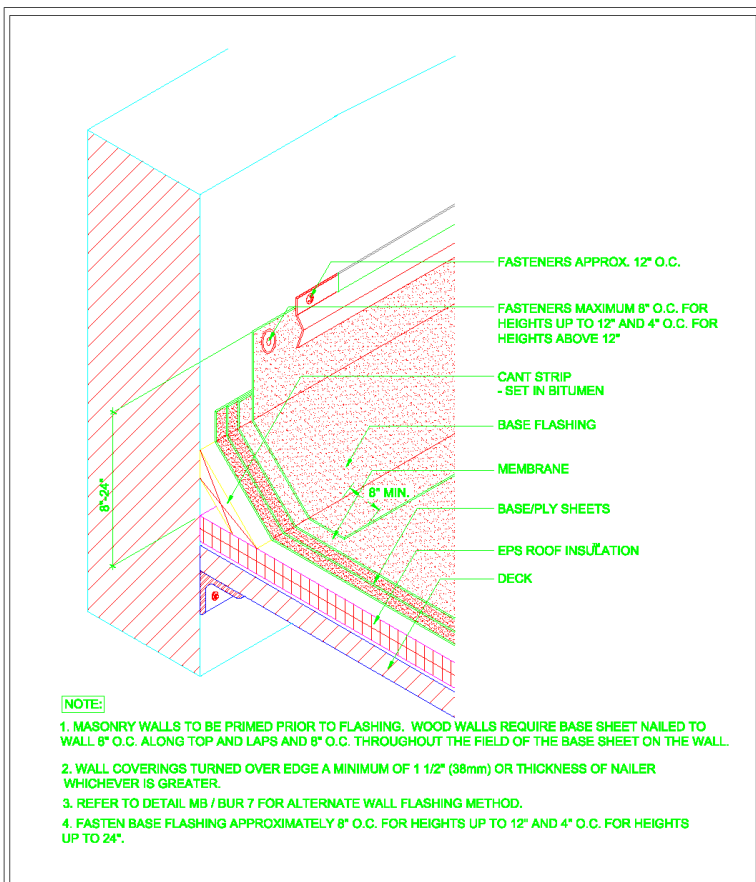
	Equipment support sleeper.	ESSEX
	USC Beaufort Campus.	6-24-2013

MBR-1/A



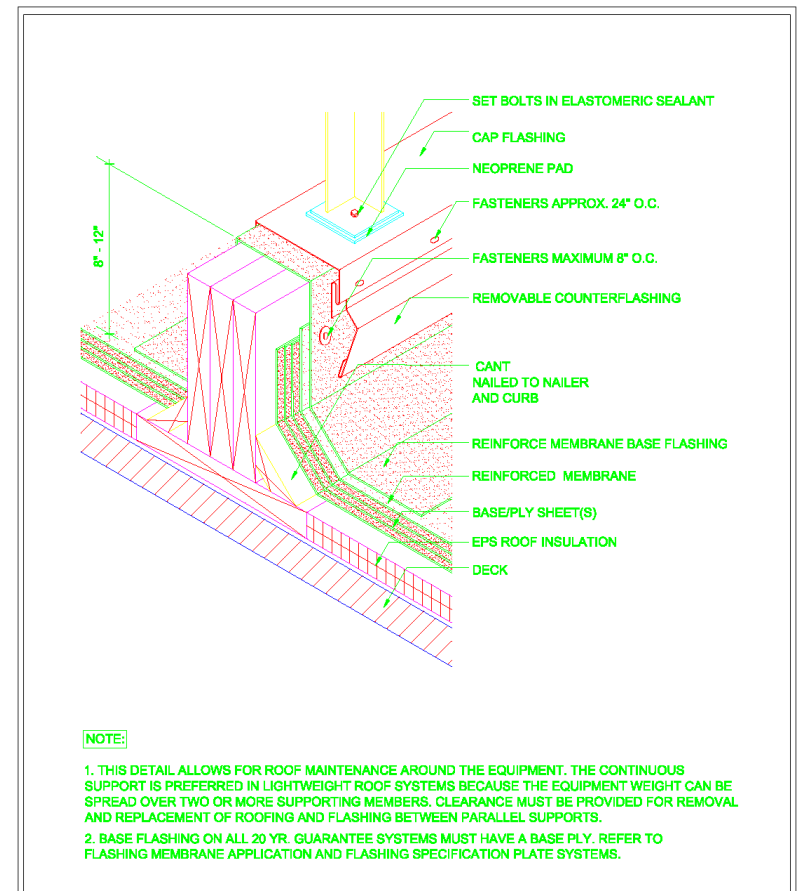
	ROOF DRAIN DETAIL	ESSEX
	USC Beaufort Campus	6-24-2013

MBR-1/B



	WALL FLASHING DETAIL	ESSEX
	N.T.S.	6-24-2013

MBR-1/C



	Equipment support sleeper.	ESSEX
	USC Beaufort Campus.	6-24-2013

MBR-1/D

MBR-1

ESSEX

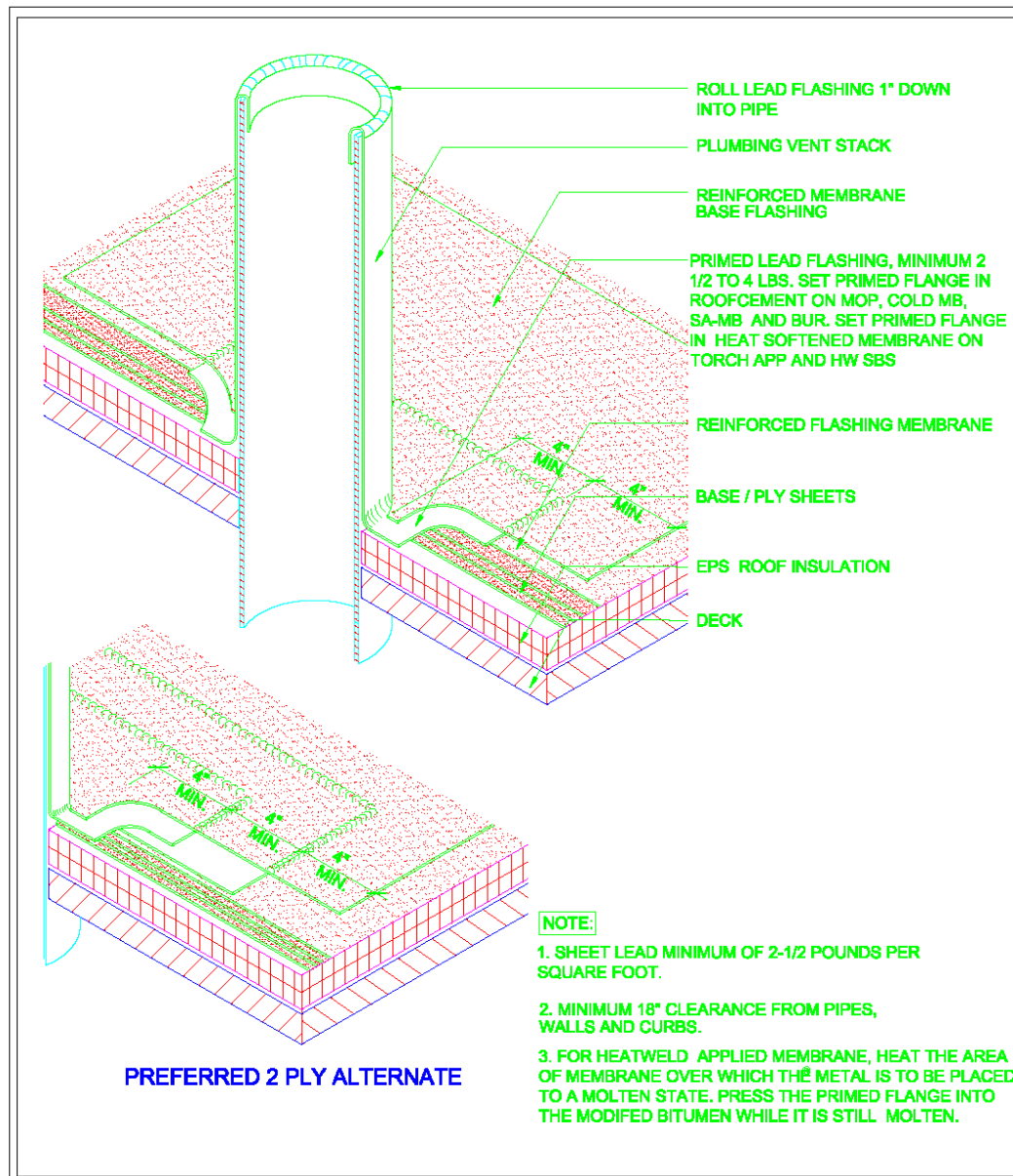
MANAGERS | ENGINEERS | CONSULTANTS

2572 Apple Valley Road, Suite 200
Atlanta, Georgia 30319 - 3527
404.365.9482 (tel) 404.365.8163 (fax)

4611 Hard Scrabble Road, Suite 109-364
Columbia, South Carolina 29229
803.873.9910 (tel) • 803.873.9913 (fax)

www.essexco.com

A Woman-Owned, Small Business (WOSB)



		VENT STACK FLASHING		ESSEX
		USC Beaufort Campus.	N.T.S.	6-24-2013

MBR-2/A

Notes:

1. Remove and safely store HVAC condenser units before beginning roof work.
2. Remove existing modified bitumen membrane roof.
3. Prepare deck for insulation, sleepers, and replacement EPS insulation.
4. Install insulation, sleepers, and EPS insulation.
5. Install modified bitumen membrane roof.
6. Install new line set entrance at fascia.
7. Replace HVAC condenser units.

MBR-2

ESSEX

MANAGERS | ENGINEERS | CONSULTANTS

2572 Apple Valley Road, Suite 200
 Atlanta, Georgia 30319 - 3527
 404.365.9482 (tel) 404.365.8163 (fax)

4611 Hard Scrabble Road, Suite 109-364
 Columbia, South Carolina 29229
 803.873.9910 (tel) • 803.873.9913 (fax)

www.essexco.com
 A Woman-Owned, Small Business (WOSB)

ROOFING REPAIRS:

1. Center for the Arts (CFA):

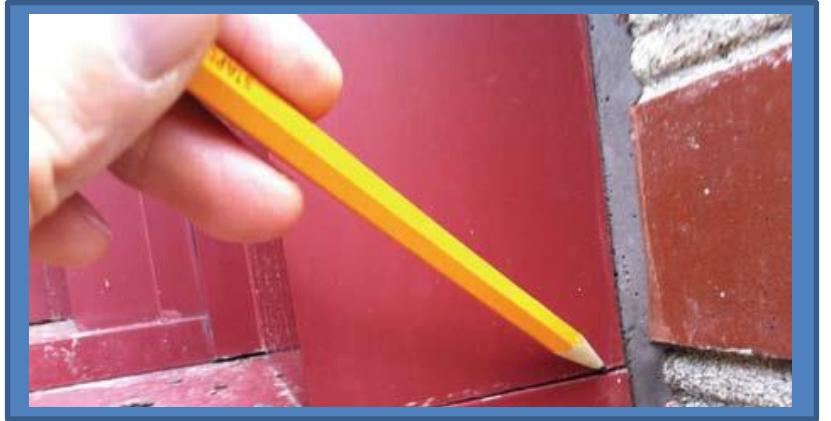
- a. Remove and replace sealants at profile terminations of standing seam metal panels.



- b. Install kick-out flashing at roof wall intersections to direct water discharge from the roof away from walls.



- c. Remove and replace caulking at reglets, windows, and expansion/control joints.



REPAIRS - 1

ESSEX

MANAGERS | ENGINEERS | CONSULTANTS

2572 Apple Valley Road, Suite 200
Atlanta, Georgia 30319 - 3527
404.365.9482 (tel) 404.365.8163 (fax)

4611 Hard Scrabble Road, Suite 109-364
Columbia, South Carolina 29229
803.873.9910 (tel) • 803.873.9913 (fax)

www.essexco.com
A Woman-Owned, Small Business (WOSB)

ROOFING REPAIRS:

2. Beaufort College Building:

- a. Make miscellaneous repairs to modified bitumen membrane on low-slope roof.



- b. Clean existing coatings from metal roof and inspect thoroughly for holes that penetrate the metal. Wire brush or otherwise (walnut-shell blast cleaning) to carefully remove rust. If such methods are too aggressive, apply a rust conversion coating to the corroded areas. Follow with an overall zinc-rich primer and a urethane roof coating.



- c. Repair coping caps.



REPAIRS-2

ESSEX

MANAGERS | ENGINEERS | CONSULTANTS

2572 Apple Valley Road, Suite 200
Atlanta, Georgia 30319 - 3527
404.365.9482 (tel) 404.365.8163 (fax)

4611 Hard Scrabble Road, Suite 109-364
Columbia, South Carolina 29229
803.873.9910 (tel) • 803.873.9913 (fax)

www.essexco.com
A Woman-Owned, Small Business (WOSB)

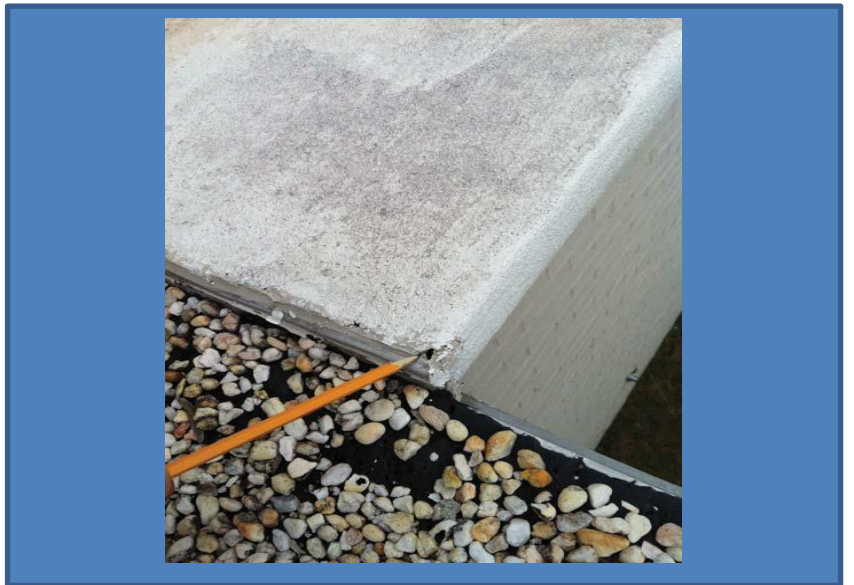
ROOFING REPAIRS:

3. Sandstone Building:

a. Repair modified bitumen membrane parapet sheet on the “new roof” end (#1: newer, ballasted built-up; #2: older, coal tar).



b. Repair EIFS band and repaint.



ESSEX

MANAGERS | ENGINEERS | CONSULTANTS

2572 Apple Valley Road, Suite 200
Atlanta, Georgia 30319 - 3527
404.365.9482 (tel) 404.365.8163 (fax)

4611 Hard Scrabble Road, Suite 109-364
Columbia, South Carolina 29229
803.873.9910 (tel) 803.873.9913 (fax)

www.essexco.com
A Woman-Owned, Small Business (WOSB)

3. Sandstone Building Continued:

- c. Coordinate repair and modification of curbs with HVAC Contractor replacing rooftop HVAC units.



4. Grayson Faculty House:

- a. Inject epoxy into railing stanchions on low-slope deck on the east end of the building. Drill into the stanchion just above each base and inject to displace water that can accumulate inside the stanchions.



- b. Repair flashing on dormer and chimney.



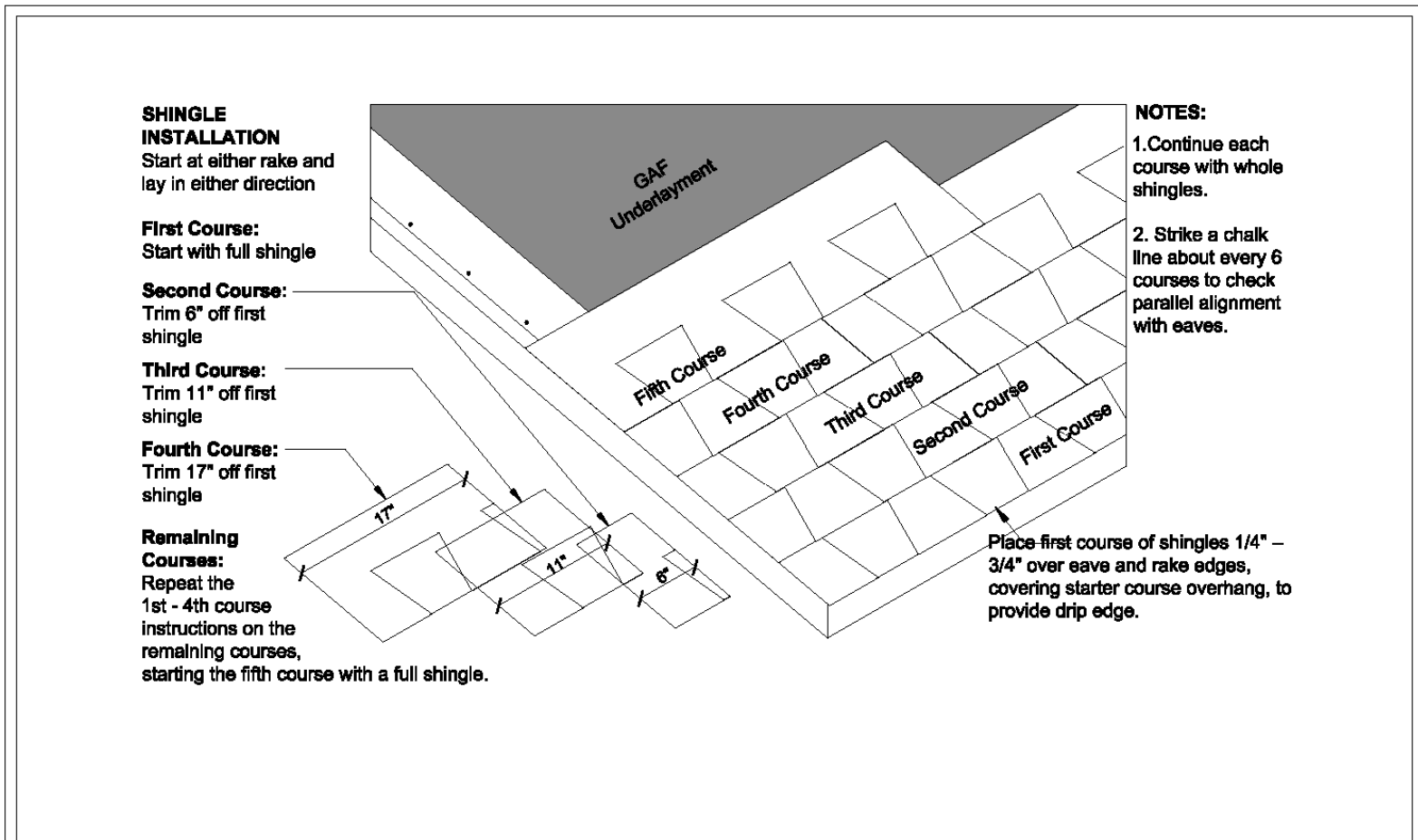
ESSEX

MANAGERS | ENGINEERS | CONSULTANTS

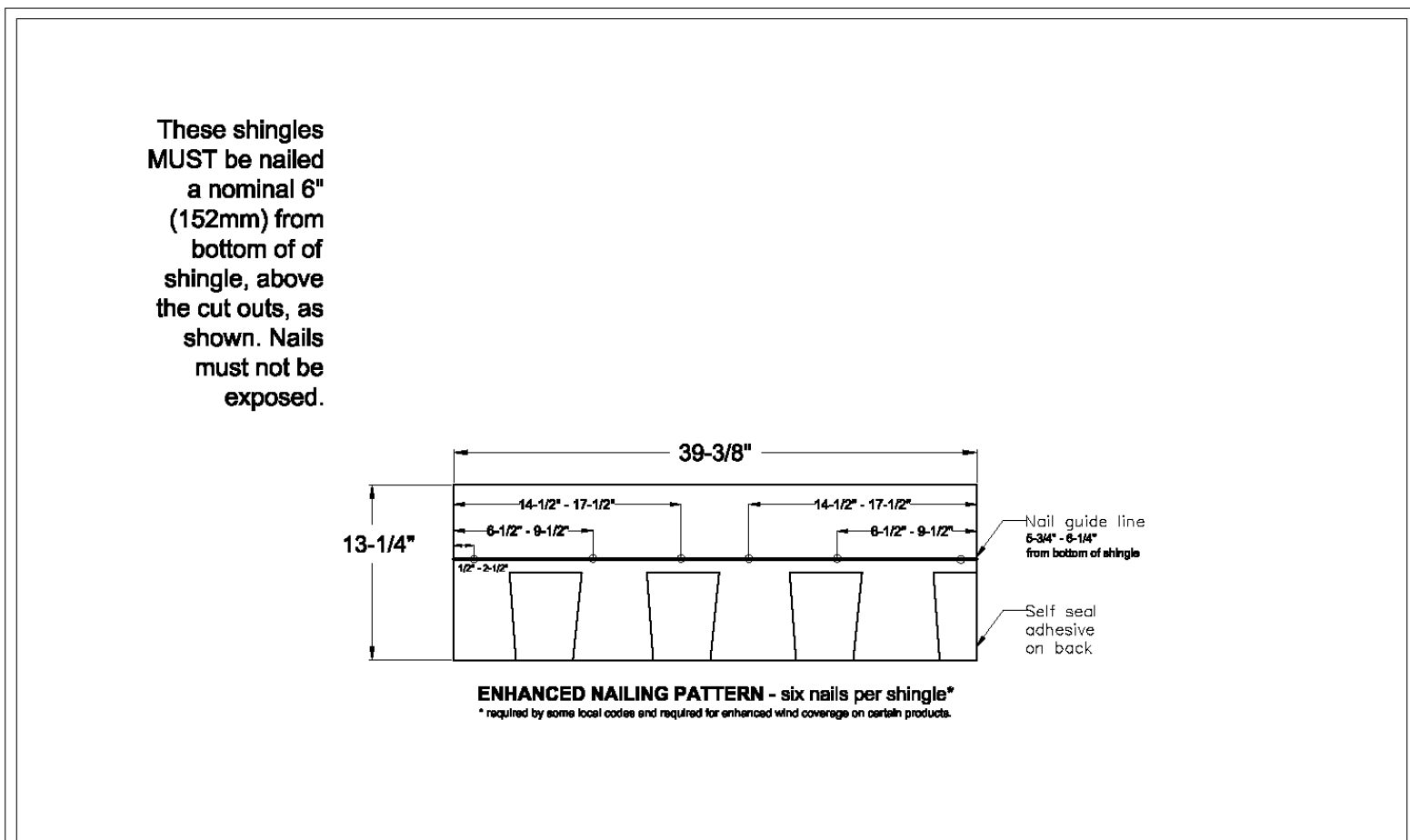
2572 Apple Valley Road, Suite 200
Atlanta, Georgia 30319 - 3527
404.365.9482 (tel) 404.365.8163 (fax)

4611 Hard Scrabble Road, Suite 109-364
Columbia, South Carolina 29229
803.873.9910 (tel) • 803.873.9913 (fax)

www.essexco.com
A Woman-Owned, Small Business (WOSB)



		SHINGLE INSTALLATION PATTERN	ESSEX
N.T.S.		USC Beaufort Campus	6-24-2013



		ENHANCED NAIL PATTERN	ESSEX
N.T.S.		USC Beaufort Campus	6-24-2013

Shingle-1

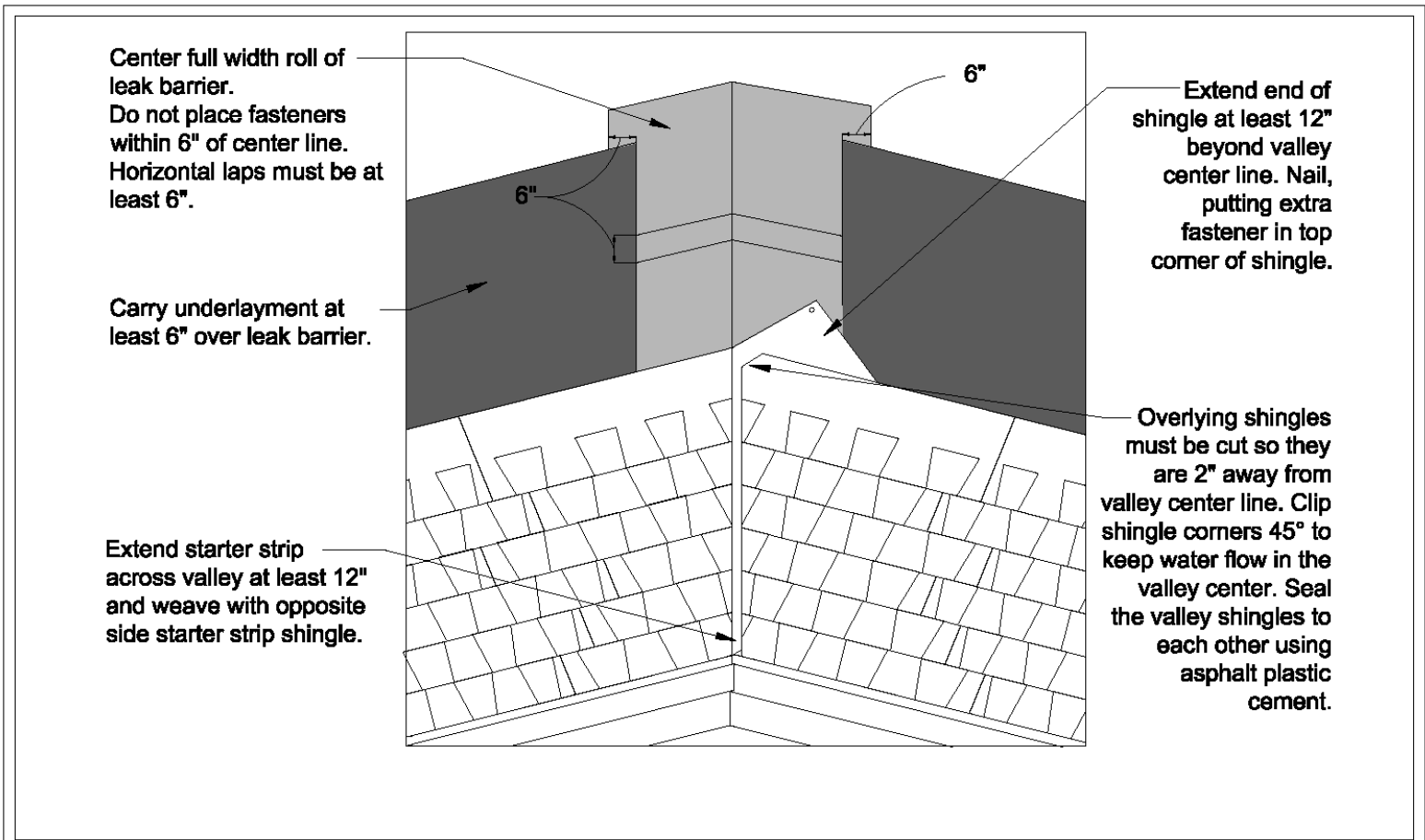


MANAGERS | ENGINEERS | CONSULTANTS

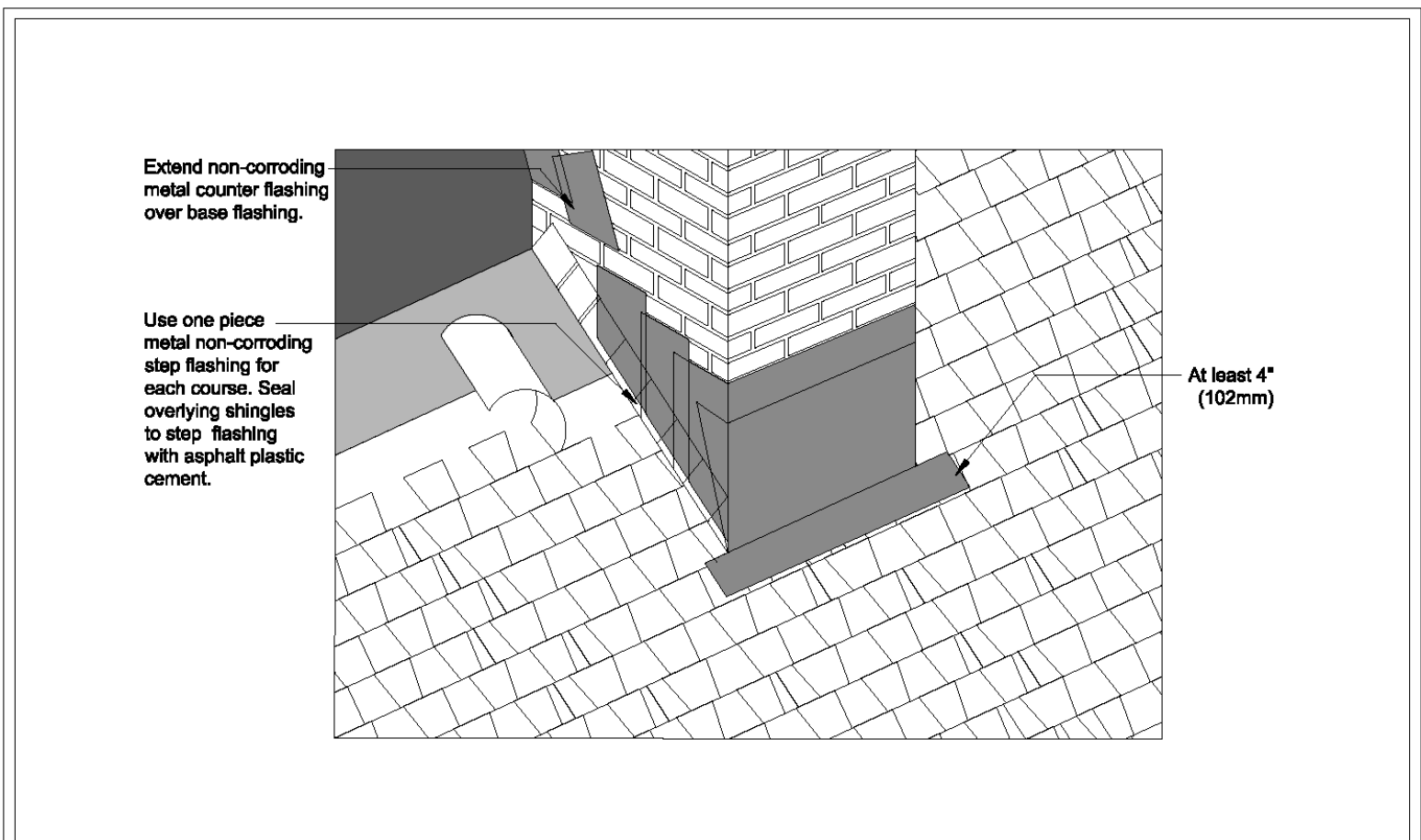
2572 Apple Valley Road, Suite 200
Atlanta, Georgia 30319 - 3527
404.365.9482 (tel) 404.365.8163 (fax)

4611 Hard Scrabble Road, Suite 109-364
Columbia, South Carolina 29229
803.873.9910 (tel) • 803.873.9913 (fax)

www.essexco.com
A Woman-Owned, Small Business (WOSB)



		CLOSED VALLEY	ESSEX
	N.T.S.	USC Beaufort Campus	6-24-2013



		CHIMNEY FLASHING	ESSEX
	N.T.S.	USC Beaufort Campus	6-24-2013

SHINGLE-2

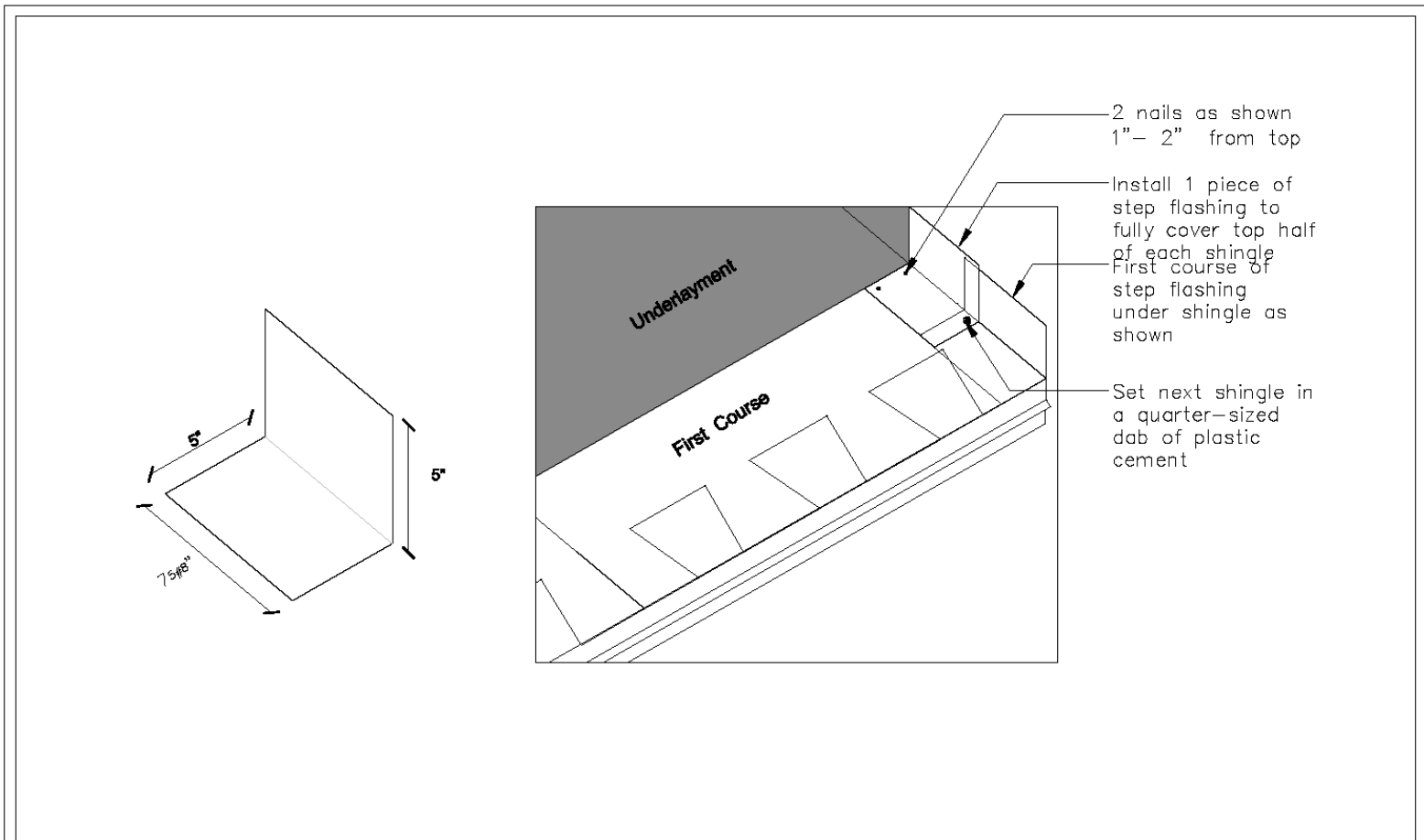
ESSEX

MANAGERS | ENGINEERS | CONSULTANTS

2572 Apple Valley Road, Suite 200
Atlanta, Georgia 30319 - 3527
404.365.9482 (tel) 404.365.8163 (fax)

4611 Hard Scrabble Road, Suite 109-364
Columbia, South Carolina 29229
803.873.9910 (tel) • 803.873.9913 (fax)

www.essexco.com
A Woman-Owned, Small Business (WOSB)



		STEP FLASHING	ESSEX
	N.T.S.	USC Beaufort Campus	6-24-2013

NOTES:

1. COORDINATE ACCESS AND LAYDOWN AREA WITH OWNER'S REPRESENTATIVE.
2. BUILDING WILL BE OCCUPIED DURING WORK.

ESSEX

MANAGERS | ENGINEERS | CONSULTANTS

2572 Apple Valley Road, Suite 200
 Atlanta, Georgia 30319 - 3527
 404.365.9482 (tel) 404.365.8163 (fax)

4611 Hard Scrabble Road, Suite 109-364
 Columbia, South Carolina 29229
 803.873.9910 (tel) • 803.873.9913 (fax)

www.essexco.com
 A Woman-Owned, Small Business (WOSB)